

Elgin County Archives and Museum




Directory Map

<https://inmagic.elgin.ca/en/permalink/archives99>

Museum / Archive: Elgin County Archives
Part Of: Elgin County Map Collection
Description Level: Item
Item Number: MAP 57
Accession Number: 2002-20
Storage Room: Archives Storage Rm. 105
Storage Location: M12
GMD: cartographic material
Date Range: c. 1930's
Physical Description: 1 map: mounted on cardboard.
Physical Condition: Fair
Scope and Content:
-Includes locations of post offices, sidings, hamlets, and township boundaries.
-Covers parts of Middlesex County, Oxford County, and Elgin County (Yarmouth, Malahide, and Bayham).
Subject Access: City and County Directories

[Permalink](#)

 No comments yet — [Join the discussion](#)



Perspective Map of the City of St. Thomas

<https://inmagic.elgin.ca/en/permalink/archives9461>

Museum / Archive: Elgin County Archives
Part Of: Elgin County Map Collection
Creator: J.C. Young
W.N. Wesbrook
Description Level: Item
Item Number: MAP 251
Accession Number: 2002-25
Storage Room: Archives Storage Rm. 105
Storage Location: M10e
GMD: cartographic material
Date Range: 1886
Series: Elgin Historical Society fonds
Physical Description: 1 map: 68 x 97 cm

Custodial History:


Acquired by the Elgin Historical Society. Stored as part of a much larger collection at the Elgin County Pioneer Museum. Moved to basement of Yurek's Drug Store after Museum fire in 2001. Donated to Elgin County Archives in December 2002.

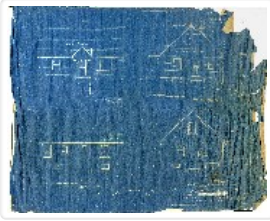
Scope and Content:

Colour perspective map of the City of St. Thomas, cloth, published in 1886 by J.C. Young and drawn by W.N. Wesbrook. Includes classified business directory and illustrations of prominent buildings, including Court House, Wellington Street; Daily & Weekly Times, Talbot Street; Knox Presbyterian Church, Hincks Street; Dr. T.W. Duncombe's Block, corner of Talbot and Southwick Streets; Paulin & Co. Hardware and J.H. Price Grocery Store, corner of Talbot and St. Catharine Streets; Grand Central Hotel, Talbot Street; Post Office, Talbot Street; Alma College, Moore Street; St. George Street Methodist Church; Catholic Church, Talbot Street; Goodwin & Jennings Furniture Store; Proposed Y.M.C.A. Rail Road Hospital; Hutchinson House, Talbot Street, Captain A. McBride, Prop.; A. McLachlin residence, Wellington Street; Baptist Church, corner of Southwick and Centre Streets; Thomas Williams Home, Church Street; Collegiate Institute; G.S. Caskey residence, Myrtle Street; Raiser's Brewery, Rudolph and Begg Prop., London and Port Stanley Road; E. Miller residence, corner of Curtis and St. George Streets; English Church, Wellington Street; City Roller Flour Mills, May Brothers Prop., Manitoba Street; China Hall and Silver Bazaar/ Opera House, Talbot Street.

Name Access: St. Thomas (Ont.)
Subject Access: Buildings
Heritage Buildings

[Permalink](#)

 No comments yet — [Join the discussion](#)



Architectural drawings showing elevations and floor plans for 42747 Southdale Line, St. Thomas

<https://inmagic.elgin.ca/en/permalink/archives165626>

Museum / Archive: Elgin County Archives
Part Of: Elgin County Map Collection
Creator: E.F. Karn
Description Level: Item
Accession Number: 2018-27
Storage Room: Archives Storage Rm. 105
Storage Location: M22 69
GMD: architectural drawings
Date Range: July 19, 1948
Physical Description: 2 architectural drawings : 52 x 65 cm

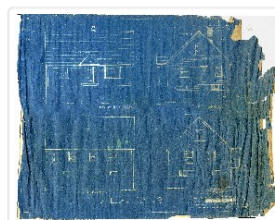
Scope and Content:

Two architectural drawings showing exterior elevations and interior floor plans for a dwelling situated at 42747 Southdale Line, St. Thomas, Ontario (Central Elgin). Created by E.F. Karn on July 19, 1948 and is titled "Frame Cottage For C. Mellor".

Legal description for the property is PT LT 40, Plan 263 Yarmouth as in E41014; Central Elgin.

Name Access: St. Thomas (Ont.)
Central Elgin (Ont. : Municipality)
Subject Access: Architecture
Buildings

Documents



2018-27.pdf

 Read PDF

 Download PDF

[Permalink](#)

 No comments yet — [Join the discussion](#)